



RoHS Compliant

### Features

- Crystal unit for automotive electronics
- Small and low profile (11.8×5.5×2.5mm)
- Ceramic package
- Product with lead free terminations
- Reflow compatible
- AEC-Q200 certified

### Applications

- ECU

### How to Order

CX1255GA 04000

①                      ②                      ③                      ④                      ⑤                      ⑥                      ⑦

- ① Series                      ② Frequency  
 ③ Load Capacitance    ④ Frequency Stability

<b>DO</b>	8 pF	—	<b>P</b>	±50×10 <sup>-6</sup>	—
<b>HO</b>	12 pF	Std.	<b>Q</b>	±100×10 <sup>-6</sup>	Std.

- ⑤ Operating Temp. Range    ⑥ Frequency Temp. Stability

<b>TW</b>	-40 to +150°C	±200×10 <sup>-6</sup>	Std.
-----------	---------------	-----------------------	------

- ⑦ Individual Specification

### Specifications

Item	Symbol	Specification	Units	Remarks
Frequency Range	f <sub>nom</sub>	3500 to 20000	kHz	
Overtone Order	OT	Fundamental	—	
Load Capacitance	CL	12	pF	
Frequency Stability	f <sub>tol</sub>	±100	×10 <sup>-6</sup>	25°C±3°C
Motional Series Resistance	R1	Table 1	ohm	
Drive Level	DL	Table 2	μW	
Operating Temp. Range	T <sub>use</sub>	-40 to +150	°C	
Storage Temp. Range	T <sub>stg</sub>	-40 to +150	°C	
Frequency Temp. Characteristics	f <sub>tem</sub>	±200	×10 <sup>-6</sup>	Freq. deviation from the value at 25°C

\* Please contact us for other specifications.

### Typical Frequencies and Part Numbers

Frequency (kHz)	Part Number
4000.000	CX1255GA04000HOQTWZ1
5000.000	CX1255GA05000HOQTWZ1
6000.000	CX1255GA06000HOQTWZ1
8000.000	CX1255GA08000HOQTWZ1
10000.000	CX1255GA10000HOQTWZ1
12000.000	CX1255GA12000HOQTWZ1
16000.000	CX1255GA16000HOQTWZ1
18000.000	CX1255GA18000HOQTWZ1
20000.000	CX1255GA20000HOQTWZ1

### Table1 Motional Series Resistance

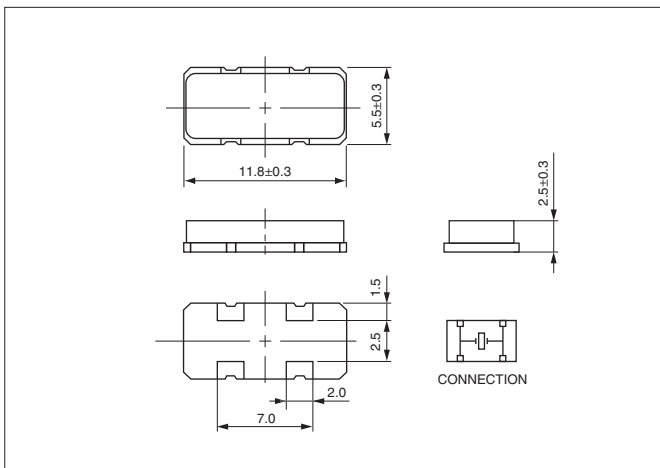
Frequency Range	Motional Series Resistance
3500 to 3999kHz	200Ω max.
4000 to 7999kHz	180Ω max.
8000 to 11999kHz	120Ω max.
12000 to 20000kHz	80Ω max.

### Table2 Level of Drive

Frequency Range	Level of Drive
3500 to 15999kHz	10μW (500μW max.)
16000 to 20000kHz	10μW (300μW max.)

### Dimensions

(Unit: mm)



### Recommended Land Pattern

(Unit: mm)

